

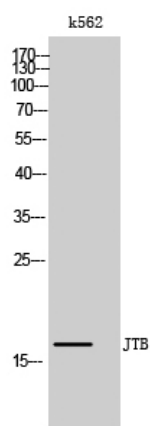


# JTB Polyclonal Antibody

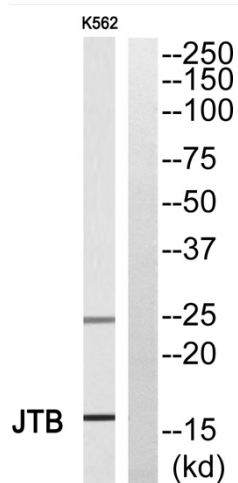
<b>Catalog No</b>	YP-Ab-13384
<b>Isotype</b>	IgG
<b>Reactivity</b>	Human;Rat;Mouse;
<b>Applications</b>	WB;IHC
<b>Gene Name</b>	JTB
<b>Protein Name</b>	Protein JTB
<b>Immunogen</b>	The antiserum was produced against synthesized peptide derived from human JTB. AA range:10-59
<b>Specificity</b>	JTB Polyclonal Antibody detects endogenous levels of JTB protein.
<b>Formulation</b>	Liquid in PBS containing 50% glycerol, 0.5% BSA and 0.02% sodium azide.
<b>Source</b>	Polyclonal, Rabbit,IgG
<b>Purification</b>	The antibody was affinity-purified from rabbit antiserum by affinity-chromatography using epitope-specific immunogen.
<b>Dilution</b>	WB 1:500-2000;IHC-p 1:50-300
<b>Concentration</b>	1 mg/ml
<b>Purity</b>	≥90%
<b>Storage Stability</b>	-20°C/1 year
<b>Synonyms</b>	JTB; HSPC222; Protein JTB; Jumping translocation breakpoint protein; Prostate androgen-regulated protein; PAR protein
<b>Observed Band</b>	17kD
<b>Cell Pathway</b>	Membrane ; Single-pass type I membrane protein . Mitochondrion . Cytoplasm. Cytoplasm, cytoskeleton, microtubule organizing center, centrosome. Cytoplasm, cytoskeleton, spindle. Detected at the centrosome and along spindle fibers during prophase and metaphase. Detected at the midbody during telophase.
<b>Tissue Specificity</b>	Ubiquitous. Expressed in all normal human tissues studied but overexpressed or underexpressed in many of their malignant counterparts.
<b>Function</b>	similarity:Belongs to the JTB family.,tissue specificity:Expressed in all normal human tissues studied but overexpressed in most of their malignant counterparts.,
<b>Background</b>	similarity:Belongs to the JTB family.,tissue specificity:Expressed in all normal human tissues studied but overexpressed in most of their malignant counterparts.,
<b>matters needing attention</b>	Avoid repeated freezing and thawing!
<b>Usage suggestions</b>	This product can be used in immunological reaction related experiments. For more information, please consult technical personnel.



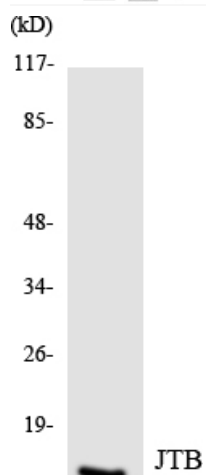
## Products Images



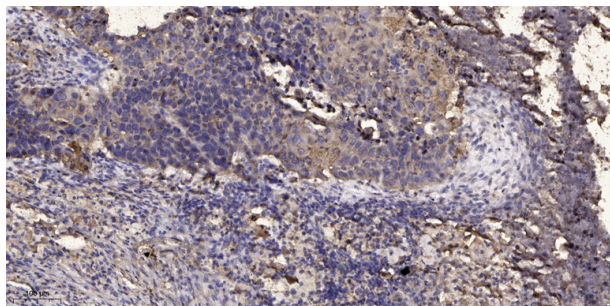
Western Blot analysis of k562 cells using JTB Polyclonal Antibody



Western blot analysis of JTB Antibody. The lane on the right is blocked with the JTB peptide.



Western blot analysis of the lysates from HUVEC cells using JTB antibody.



Immunohistochemical analysis of paraffin-embedded human Squamous cell carcinoma of lung. 1, Antibody was diluted at 1:200(4° overnight). 2, Tris-EDTA,pH9.0 was used for antigen retrieval. 3,Secondary antibody was diluted at 1:200(room temperature, 45min).